

شركة قِمم الشُّهَب للمقاولات العامة

QIMAM ALSHOHAB FOR GENERAL CONTRACTING



COMPANY PROFILE



Website

www.qimamalshohab.com



Table of Contents

INTRODUCTION	01
SERVICES OFFERED	02
ROADS AND INFRASTRUCTURE	03
INTERIOR AND FINISHING WORK	04
STEEL STRUCTURE & CONCRETE WORK	05
EARTH WORK AND LANDSCAPING	06
COMMERCIAL AND HOSPITALITY WORK	07
MEP WORK	08-13
MANPOWER SUPPLY SERVICES	14
EQUIPMENT RENTAL SERVICES	15
QUALITY AND SAFETY	16
CLIENT TESTIMONIALS	17
OUR CAPACITY	17
CONTACT US	17

INTRODUCTION



WHO WE ARE?

We are Civil frame Company founded 2024, The company offers Engineering Construction and Construction Project management. Qimam Al-shohab to organizations or Individuals seeking construction services.

WHO IS QIMAM ALSHOHAB ?

We work closely with our clients to accurately interpret their dreams/visions in drawings and bring them to the desired reality through construction solutions to meet their needs; We communicate with our clients throughout the construction process to keep them informed of progress and to ensure that our project keeps on schedule and within budget. We are committed to providing the best possible construction expertise & service to ensure cost effective and successful We provide engineering projects. construction services to Power distribution and transmission companies, Parastatals, oil and pipeline companies, public works agencies, municipalities, and commercial/residential real estate developers. Our area of expertise includes but not limited to building technology, civil and structural engineering

We are offering Royal services coupled with the best products and advice by adopting the latest technologies, advanced processes and agile methodology

Values

Mission

·To provide exceptional contracting services that meet the highest industry standards and exceed client expectations.

Vision

·To be the leading contracting company in the region, recognized for our expertise, innovation, and commitment to quality.

Values

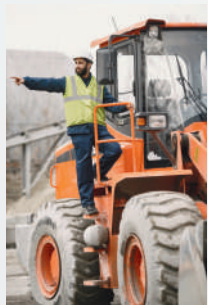
·We believe in maintaining the highest standard of professionalism, integrity, creativity, positive attitude, delivery that meets and surpass expectations while offering prompt and lasting solutions that stand the test of time

SERVICES OFFERED

2



- All different types of Construction (Civil & MEP)
- Road's and Infrastructure work
- Interior and Finishing Work
- Steel structure work
- Concrete work
- Earth work and Landscaping
- Commercial and Hospitality work
- MEP work
- Manpower supply
- Equipment rental



ROADS AND INFRASTRUCTURE

3



- Construction and maintenance of infrastructure projects
- Expertise in roads, bridges construction
- Adherence to industry best practices and safety standards
- RAINWATER HARVESTING TANK

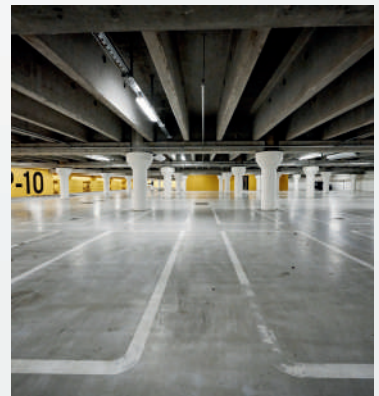


INTERIOR AND FINISHING WORK

4



- Design and finalizing all type of finishing projects
- SALE'S LOUNGE / CAFETERIA AREA / LIFT LOBBY / SHOW FLATS
- / LANDSCAPE / FLAT FIT OUTS.



STEEL STRUCTURE & CONCRETE WORK

5



- **Preparing Shop Drawings:** Designing and preparing detailed drawings to facilitate the manufacturing and installation processes.
- **Executing Concrete Work:** Carrying out concrete pouring tasks, including foundations, columns, and slabs, ensuring quality.
- **Installing Steel Structures:** Assembling and installing steel structures safely and efficiently, adhering to safety standards.
- **Project Management:** Overseeing all phases of the project to ensure compliance with deadlines and budget constraints.

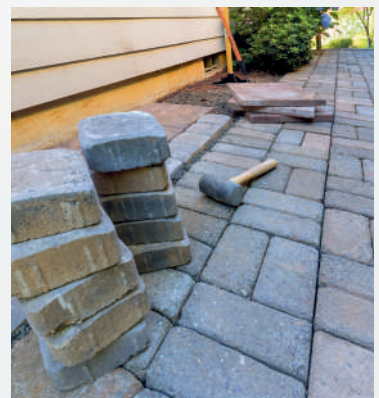
⋮

EARTH WORK AND LANDSCAPING

6



- Excavations in all types of soil using the latest equipment and techniques.
- Supporting the sides of excavations (shoring) and groundwater dewatering.
- Backfilling and all different types of land and hardscaping work.



COMMERCIAL AND HOSPITALITY WORK

7



- **Design and Construction:** Executing construction and renovation projects for commercial and hospitality spaces with a focus on modern design.
- **Maintenance and Management Services:** Providing maintenance services and operational support to maintain the quality.





- **Piping Services**

- Fabrication and installation of FRP, RTR, and HDPE piping systems
- Expertise in chemical, petrochemical, and industrial applications
- Adherence to international standards and specifications





- **Pipe Welding Services**
 - ASME Section IX and API 1104 certified welders
 - Specialized in high-pressure and high-temperature welding
 - Quality assurance and testing to ensure weld integrity





- **HVAC System Services**

- **Design, installation, and maintenance of HVAC systems**
- **Expertise in commercial, industrial, and residential applications**
- **Energy-efficient and environmentally friendly solutions**

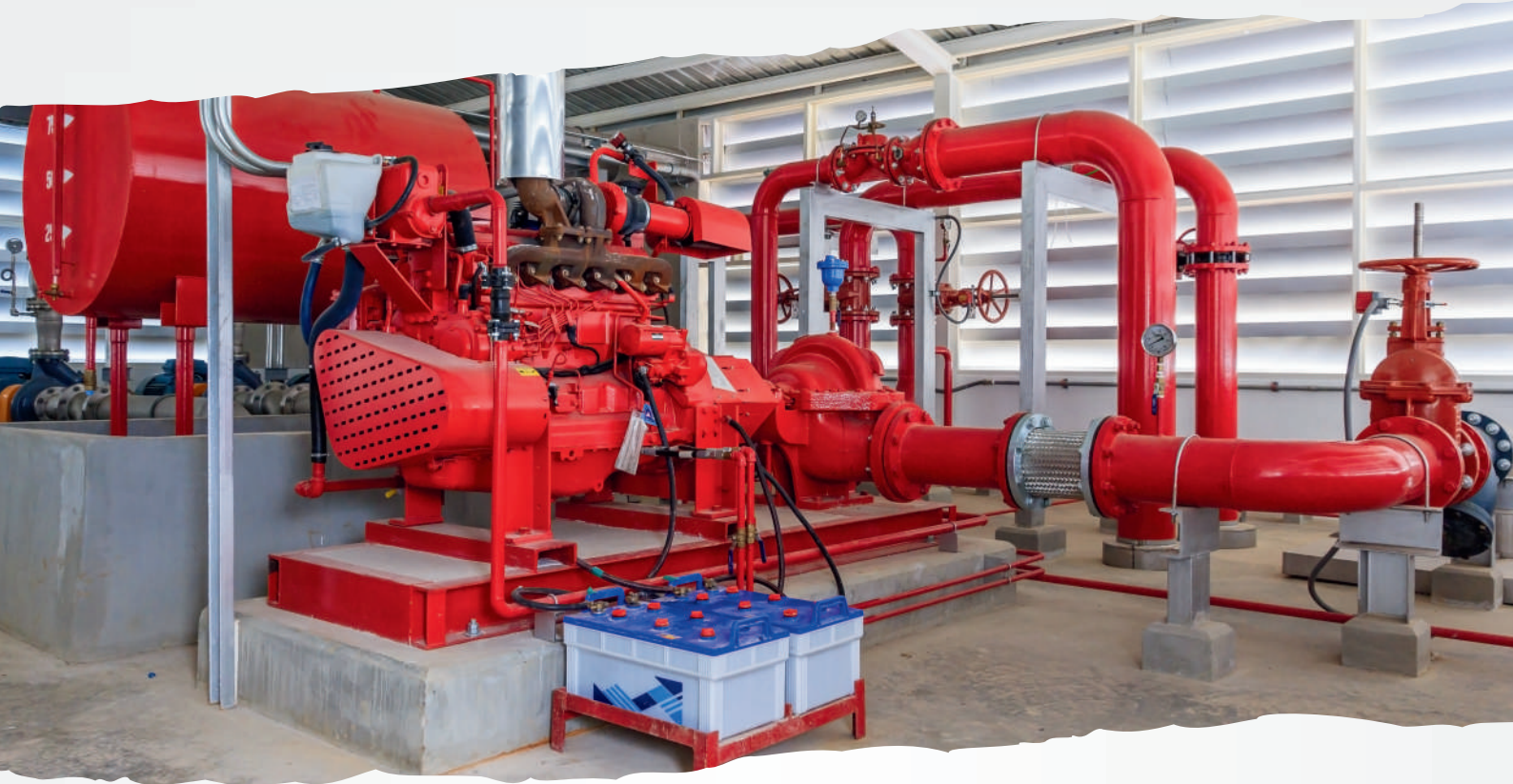




- **Electrical Termination Services**

- Termination and testing of electrical cables and equipment
- Expertise in LV, MV, and HV systems
- Compliance with IEC and NEC standards





- **Fire Alarm & Fire Fighting Services**

- Design, installation, and maintenance of fire alarm and fire fighting systems
- Expertise in commercial, industrial, and residential applications
- Compliance with NFPA and local fire codes





- **Testing and Commissioning Services**

- **Functional testing and commissioning of mechanical, electrical, and HVAC systems**
- **Verification of system performance and compliance with specifications**
- **Comprehensive reporting and documentation**



MANPOWER SUPPLY SERVICES

14



- Provision of skilled and experienced manpower
- Expertise in various trades, including electricians, plumbers, welders, carpenters, steel fixers, masons, painters, and tilers
- Compliance with labor laws and regulations



EQUIPMENT RENTAL SERVICES

15



- Rental of a wide range of construction and industrial equipment
- Expertise in cranes, excavators, and generators
- Flexible rental terms and competitive rates



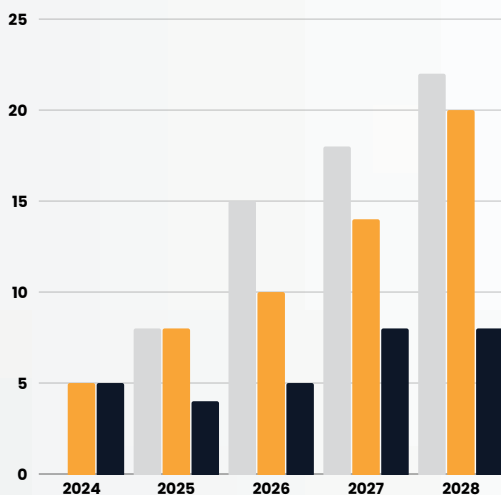


- **Commitment to quality and safety in all aspects of operations**
- **Regular training and development programs for employees**



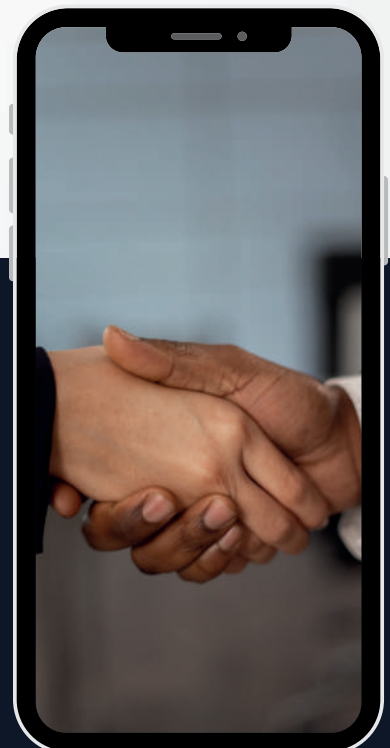
Client Testimonials

- Positive testimonials from satisfied clients
- Recognition of expertise, professionalism, and commitment to excellence



Our Capacity

Consists of top of the range equipment and machinery, including Earth movers and Transport Equipment, Reinforced Concrete Equipment, and Light weight Machinery



For Enquires

 Address: 2322 Riyadh, KSA

 Phone: +966 539853537

 Email: management@qimamalshohab.com

 Website: qimamalshohab.com

